



1643 Pittwater Road MONA VALE NSW

8 4 4

Clever buying in a prime Northern Beaches pocket, buyers will love the flexibility that comes with this property. Positioned high-side from the road, the generous 993 sqm site consists of two residences with dual occupancy making it an exciting opportunity for those with a large or extended family, those looking for a home plus income or investors wishing to capitalise. It consists of two four bedroom, two bathroom homes with a contemporary residence at the front and the second with a pool at the rear.

House 1:

- ? Modern stylish interiors, spacious open plan living and dining rooms
- ? Sleek stone and gas kitchen, stainless appliances and breakfast bench
- ? Front balcony, ducted air conditioning, powder room
- ? Four bedrooms privately positioned in their own wing,

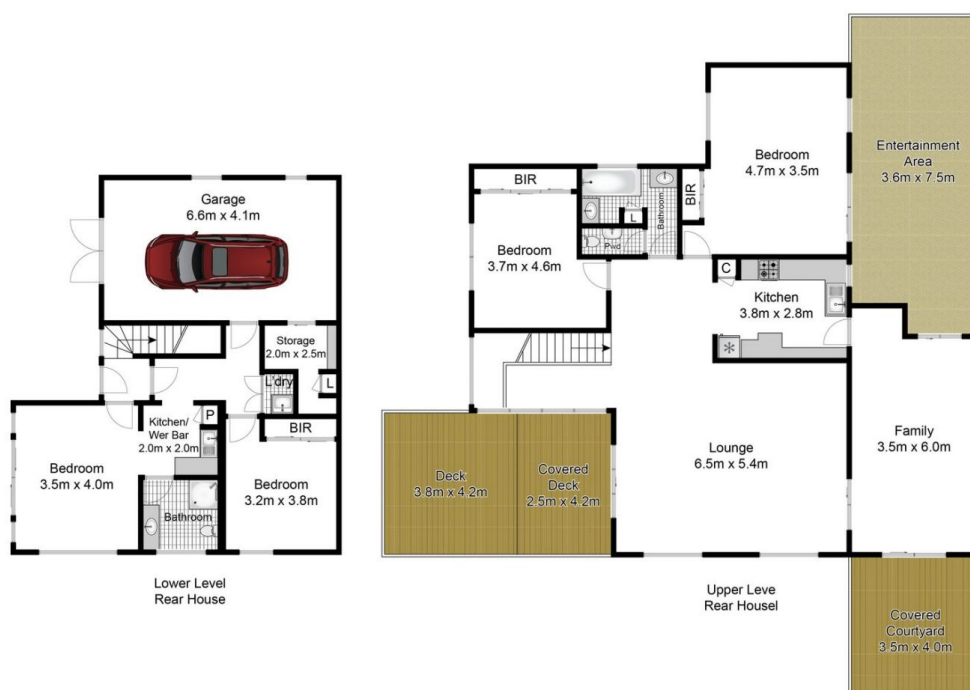
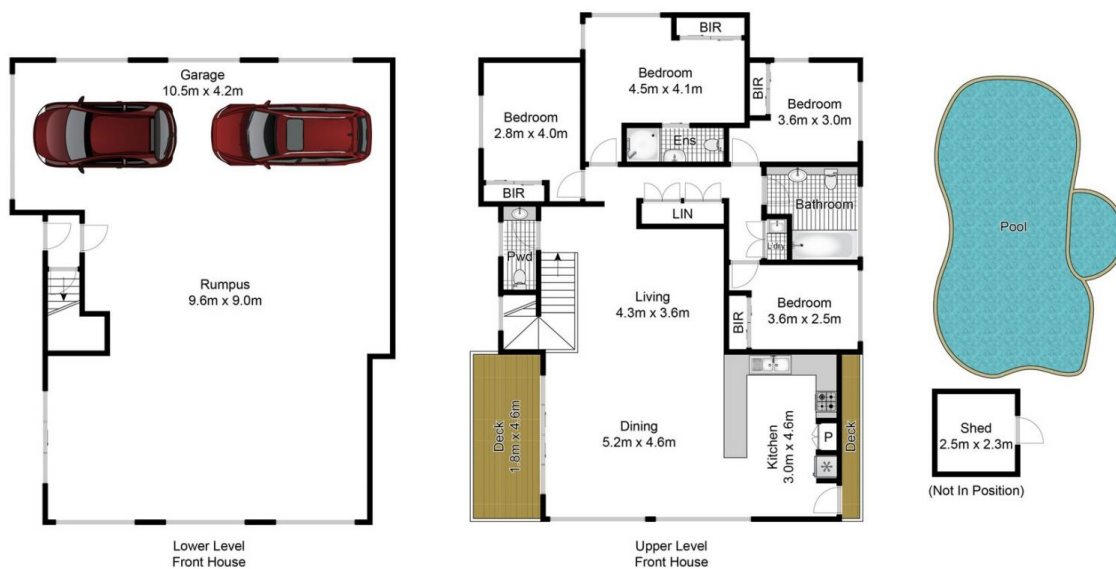
View : <https://www.hunterestateagents.com.au/7781412>



Duane Hunter
0299707220



Mitchell Wachter
0299707220



Whilst bwwm.com.au has made every attempt to ensure the accuracy of the floor plan contained here, measurements are approximate and no responsibility is taken for any error, omission, or mis-statement. This plan is for illustrative purposes only.

1643 Pittwater Road, Mona Vale

