



## 81 Alexandra Crescent BAYVIEW NSW

4 3 5

Positioned high on one of Bayview's most exclusive cul-de-sac's, this extraordinary property is arguably the best holding in the area. Comprising a rare 2,105 sqm block (two lots and two titles), the views are spectacular, north facing and spanning across Pittwater to Lion Island. The sprawling double brick home has been placed for the views and although grand in its time is now ready for a revival. Seek to renovate or remove and replace with one or two homes (STCA), capitalising on the amazing opportunity.

? Completely private, set high above the road to capture the panoramas

? Solidly built, double brick and concrete, high ceilings, banks of French doors

? Vast deep wraparound alfresco terrace ideal for large-scale entertaining

? Elegant formal lounge with a fireplace, under floor

**Price** : \$ 3,550,000

**Land Size** : 2105 sqm

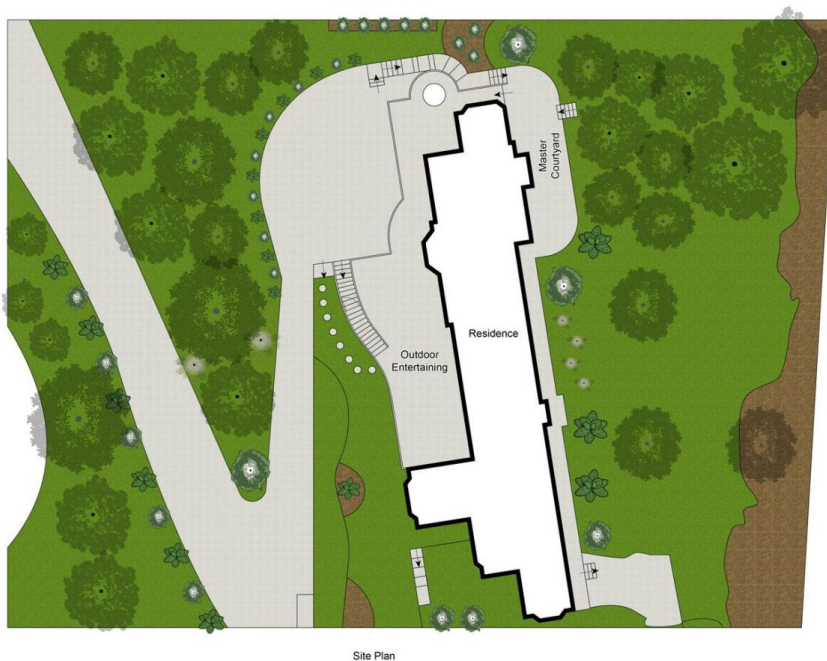
**View** : <https://www.hunterestateagents.com.au/7585812>



**Duane Hunter**  
0299707220



**Siggi Muehlich**  
99707220



Site Plan

Whilst [bwrm.com.au](http://bwrm.com.au) has made every attempt to ensure the accuracy of the floor plan contained here, measurements are approximate and no responsibility is taken for any error, omission, or mis-statement. This plan is for illustrative purposes only.

**81 Alexandra Crescent, Bayview**

