



**19 Emma Street MONA VALE NSW**

7 3 3

Enjoying a perfect north-east facing aspect and elevated position with sparkling ocean views from its upper level, this contemporary stunner delivers more than most. The home includes a highly flexible floor plan, substantial, fresh and bright, it promotes a wonderfully relaxed living environment with expansive decks and a stunning master retreat.

**Price** : \$ 2,920,000  
**Land Size** : 695.6 sqm  
**View** : <https://www.hunterestateagents.com.au/6492427>

- ? Prime corner setting on a cul-de-sac street, north-east aspect
- ? Timber floors, multiple doors open out to the immense decks
- ? Expansive family room, spacious dining room, gas bayonet
- ? Servery window from the modern gas kitchen, European appliances
- ? Separate downstairs area with two bedroom, perfect for



**Duane Hunter**  
(02) 9970 7220



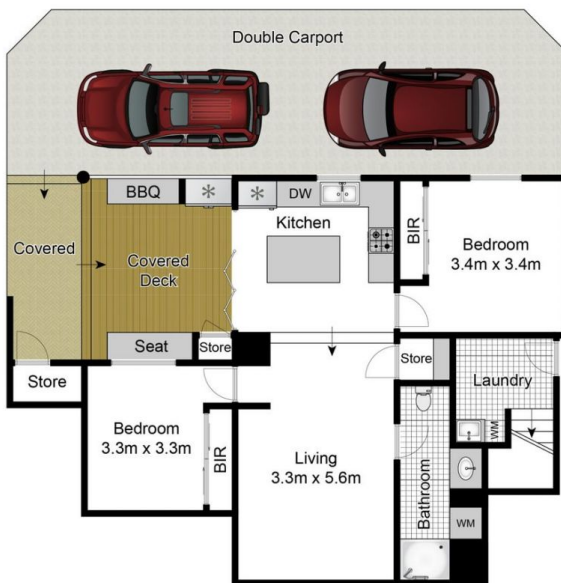
**Siggie Muehlich**  
99707220



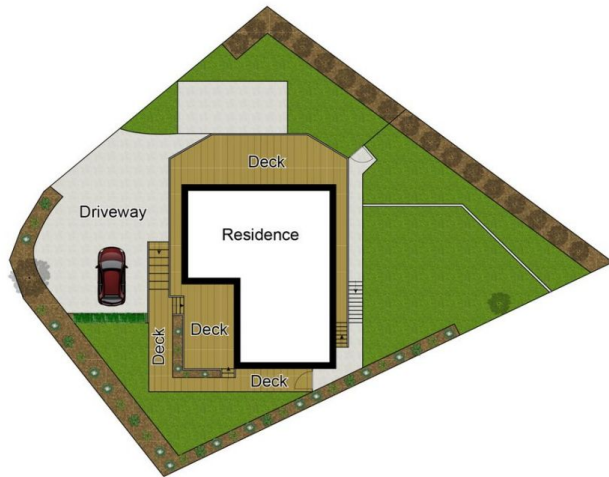
Ground Floor



First Floor



Lower Ground Floor



Site Plan

Approx Land Area 696m<sup>2</sup>

Whilst [bwrn.com.au](http://bwrn.com.au) has made every attempt to ensure the accuracy of the floor plan contained here, measurements are approximate and no responsibility is taken for any error, omission, or mis-statement. This plan is for illustrative purposes only.

## 19 Emma Street, Mona Vale



HUNTER  
ESTATE  
AGENTS